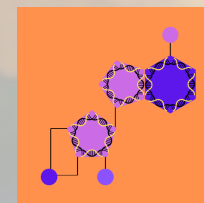


# La bioquímica de la tardor



---

Núria Camp Alabau  
cAMP divulgatiu

## Hipotàlem

- \* Hormona alliberadora de tiotropina (TRH)
- \* Dopamina
- \* Somatocrinina (GHRH)
- \* Somatostatina (GHIH)
- \* Hormona alliberadora de gonadotropina (GnRH)
- \* Hormona alliberadora de corticotropina (CRH)
- \* Oxitocina
- \* Vasopressina (ADH)

## Glàndula tiroide

- \* Triiodotironina (T3)
- \* Tiroxina (T4)

## Glàndula paratiroide

- \* Hormona paratiroidal (PTH)

## Glàndula pineal

- \* Melatonina

## Hipòfisi

### Anterior

- \* Somatotropina (GH)
- \* Tiotropina (TSH)
- \* Corticotropina (ACTH)
- \* Folitropina (FSH)
- \* Hormona luteostimulant (LH)
- \* Prolactina (PRL)

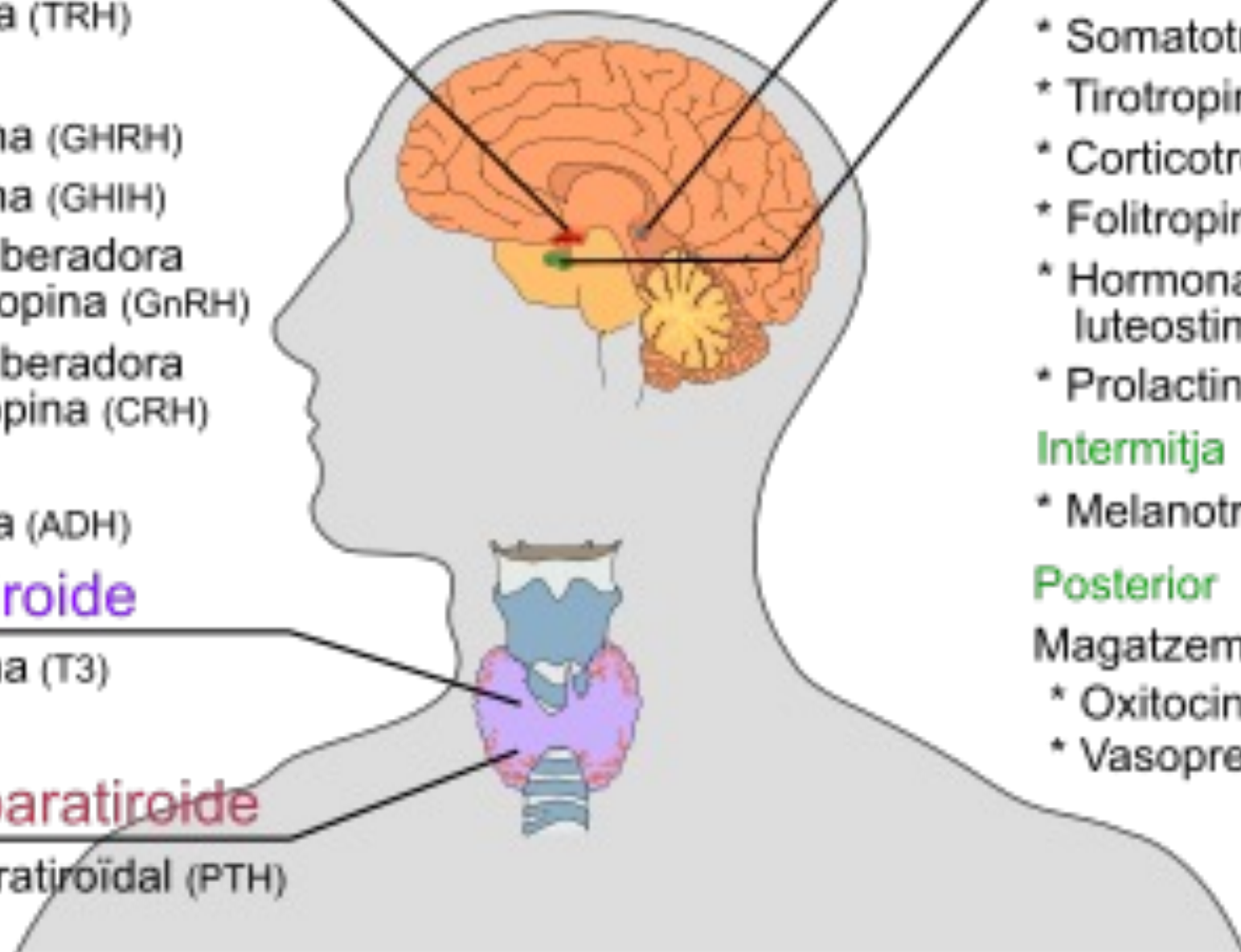
### Intermitja

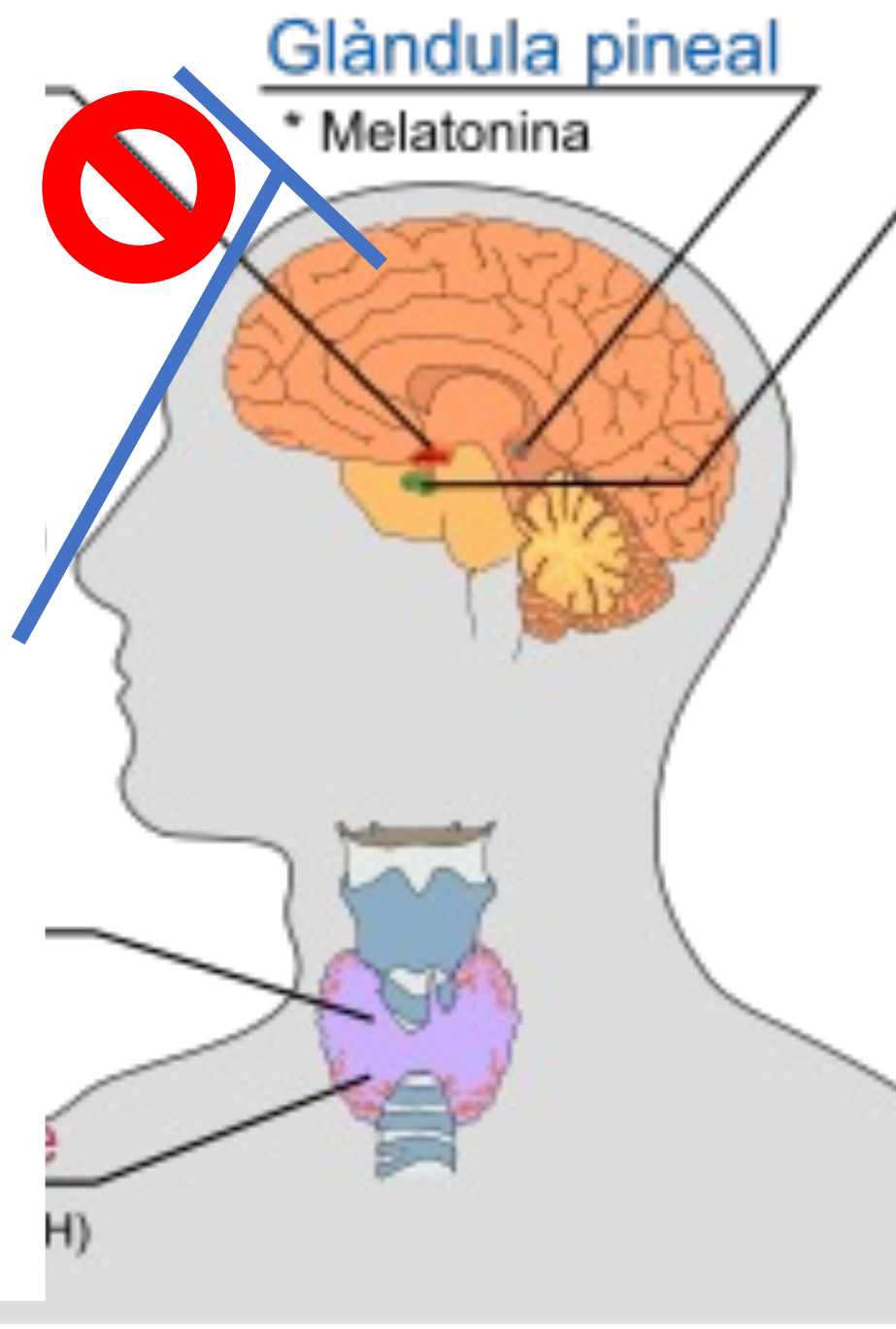
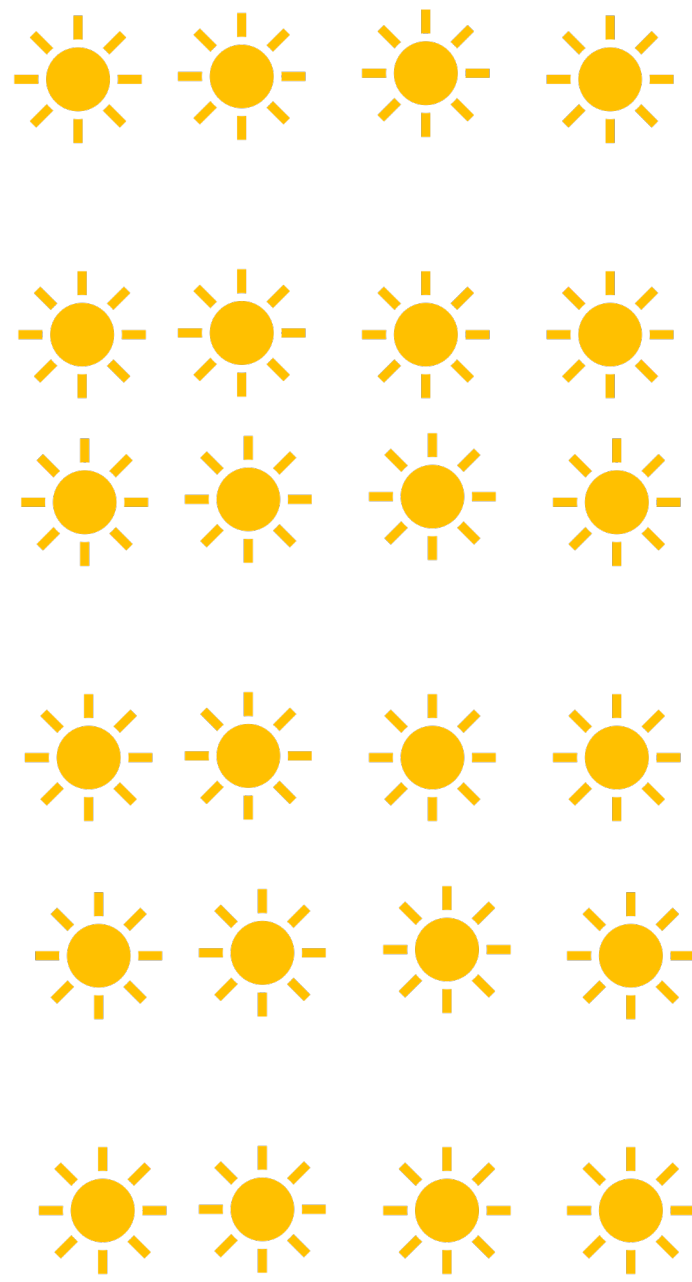
- \* Melanotropina (MSH)

### Posterior

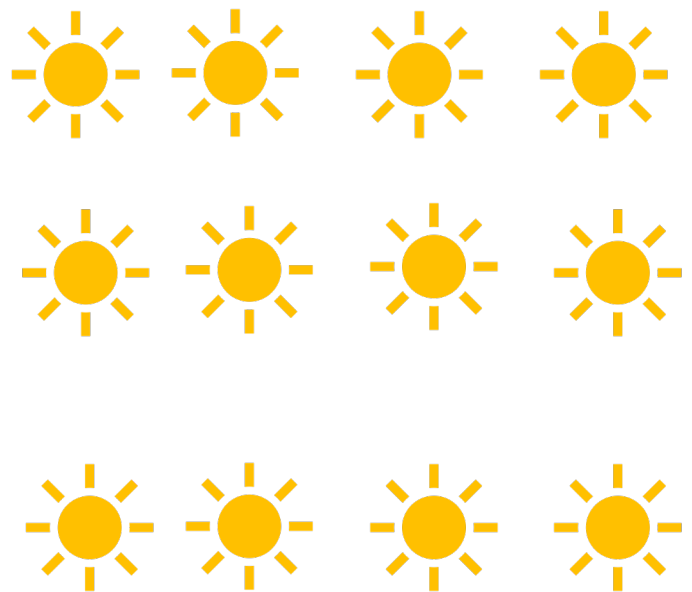
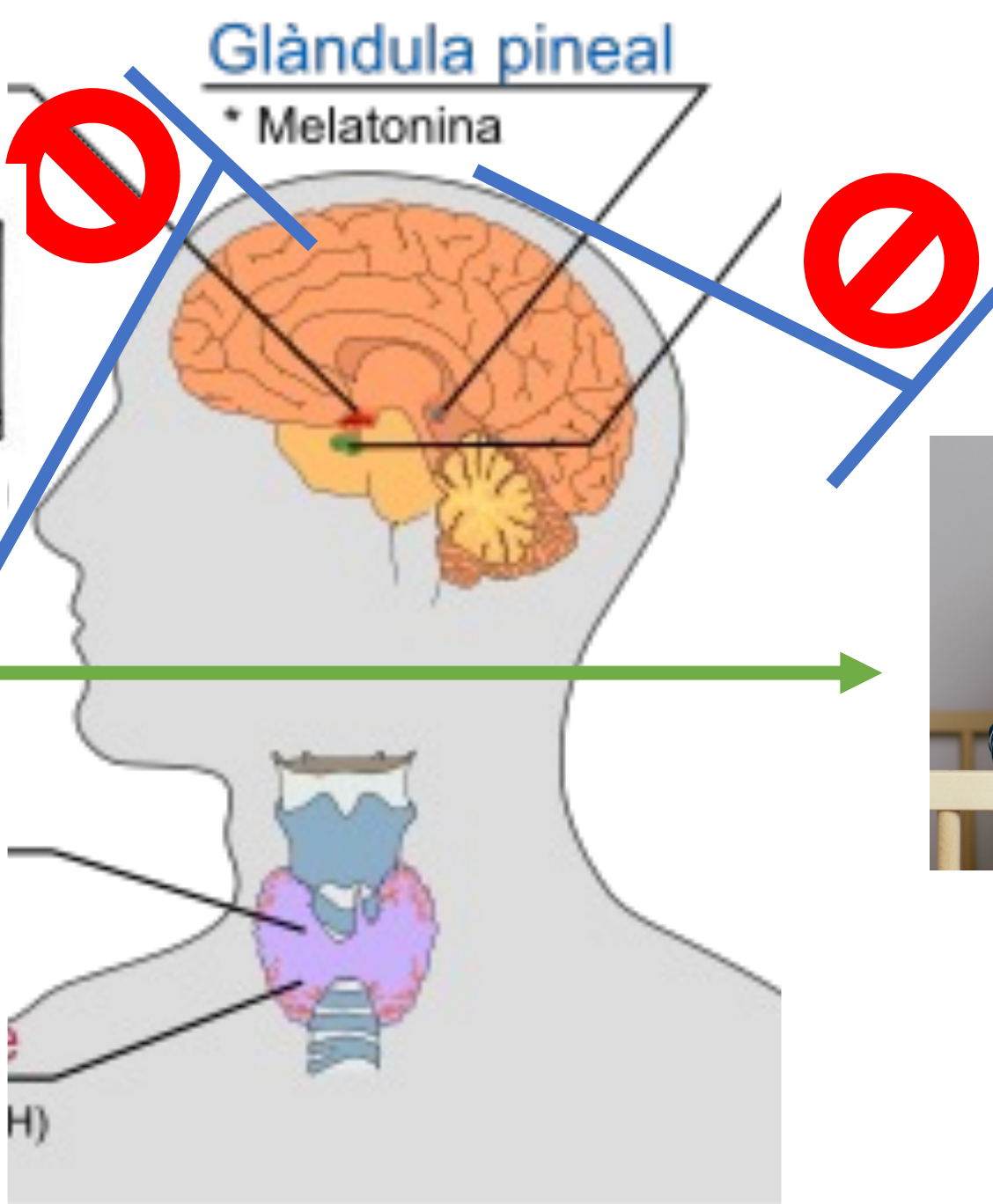
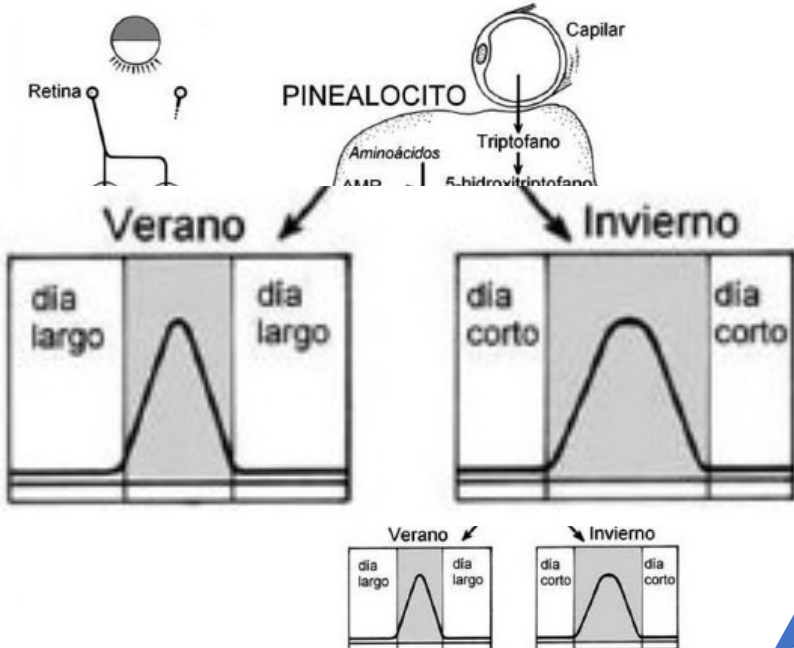
Magatzem de:

- \* Oxitocina
- \* Vasopressina









1841-1930

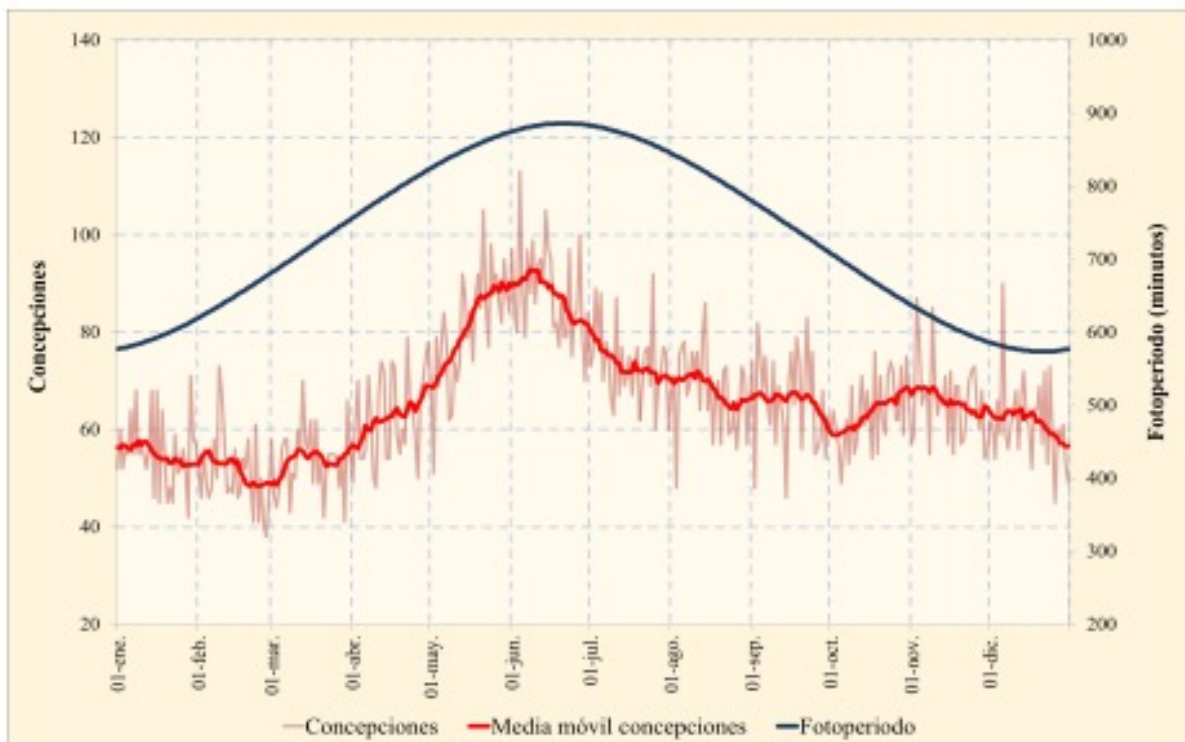


Figura 1. Distribución anual de concepciones y fotoperiodo (1841-1930).

A partir de 1931

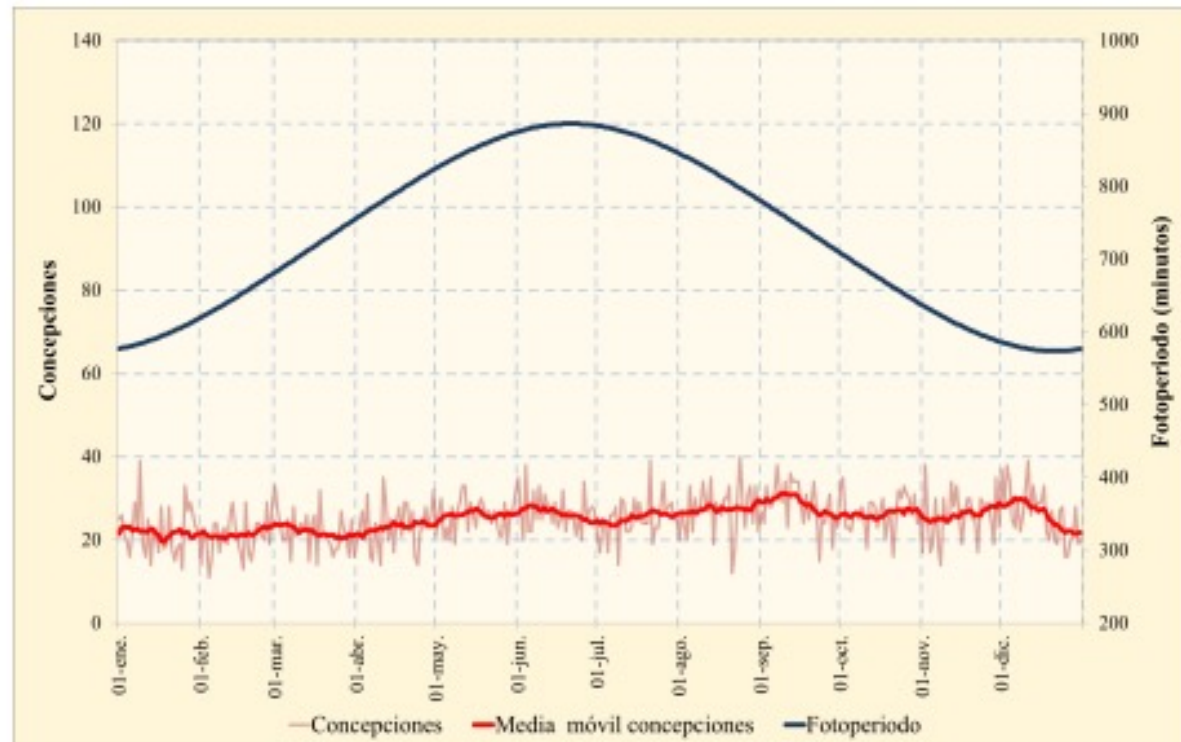
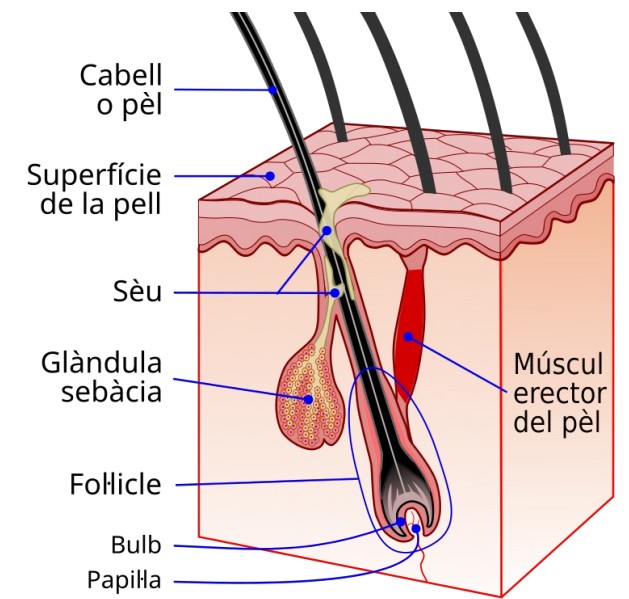
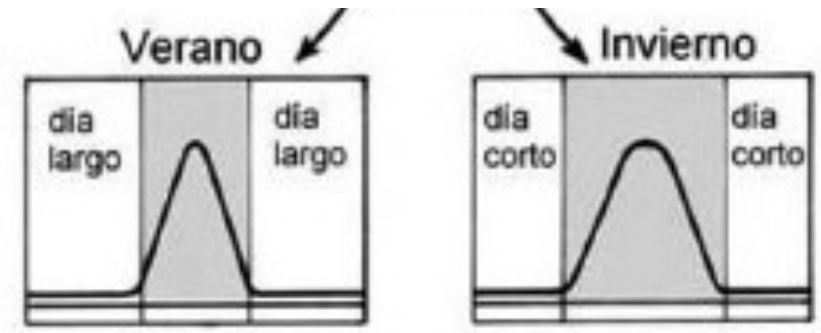
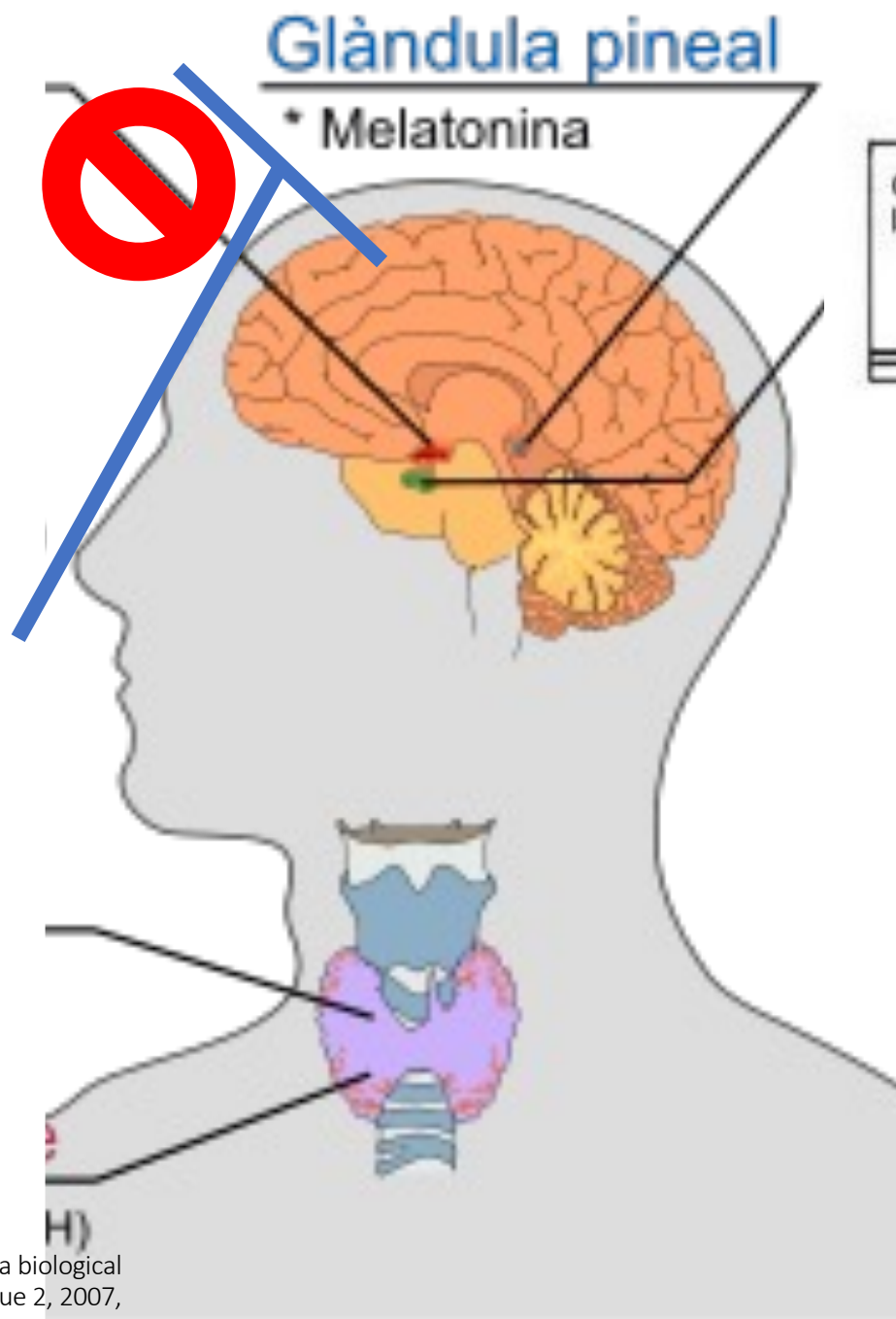
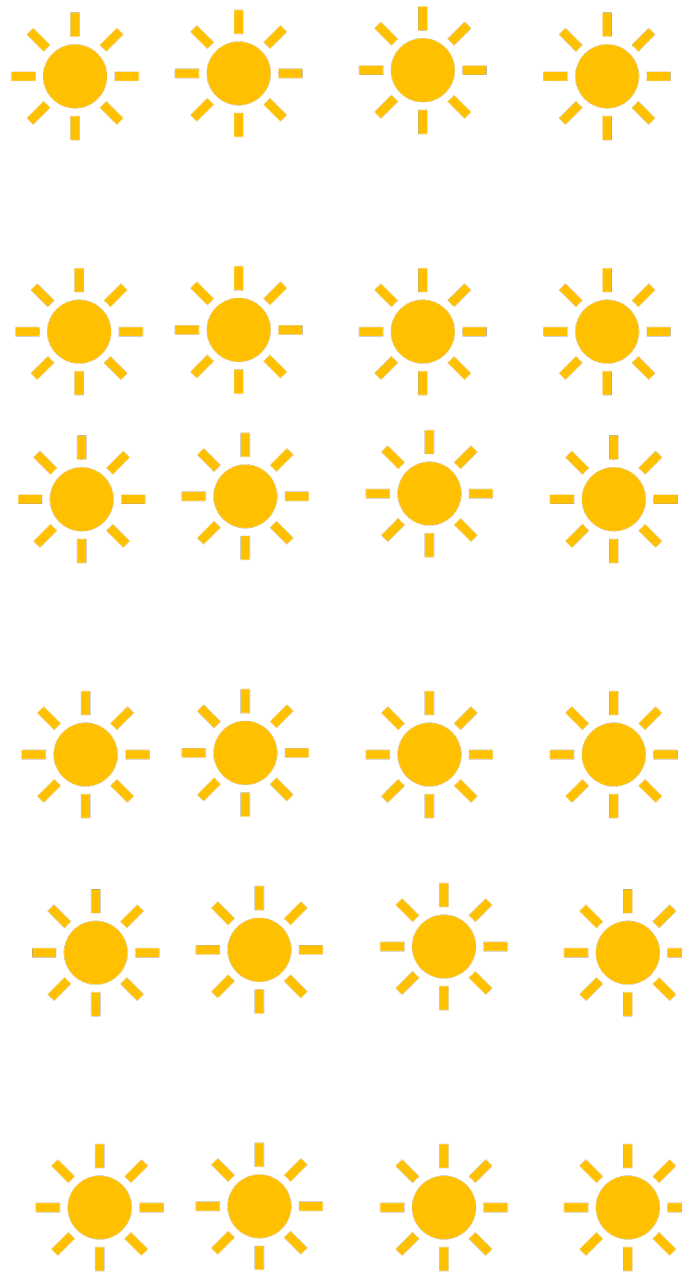
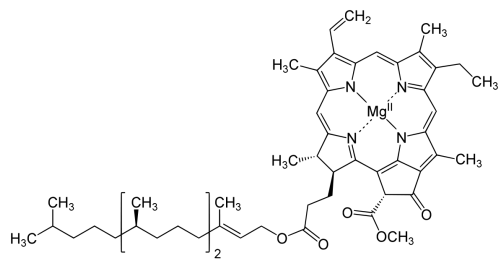


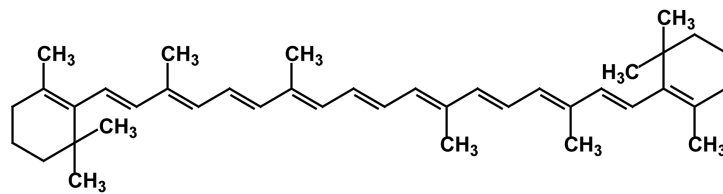
Figura 2. Distribución anual de concepciones y fotoperiodo (1931-1990).



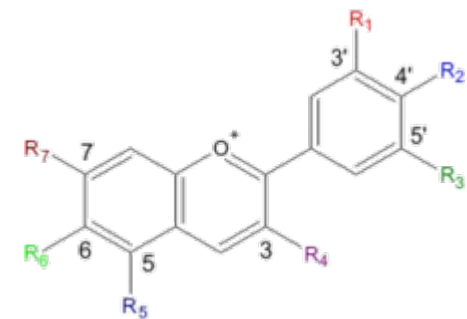
1. Anagen
2. Catagen
3. Telogen



**Clorofil·la**

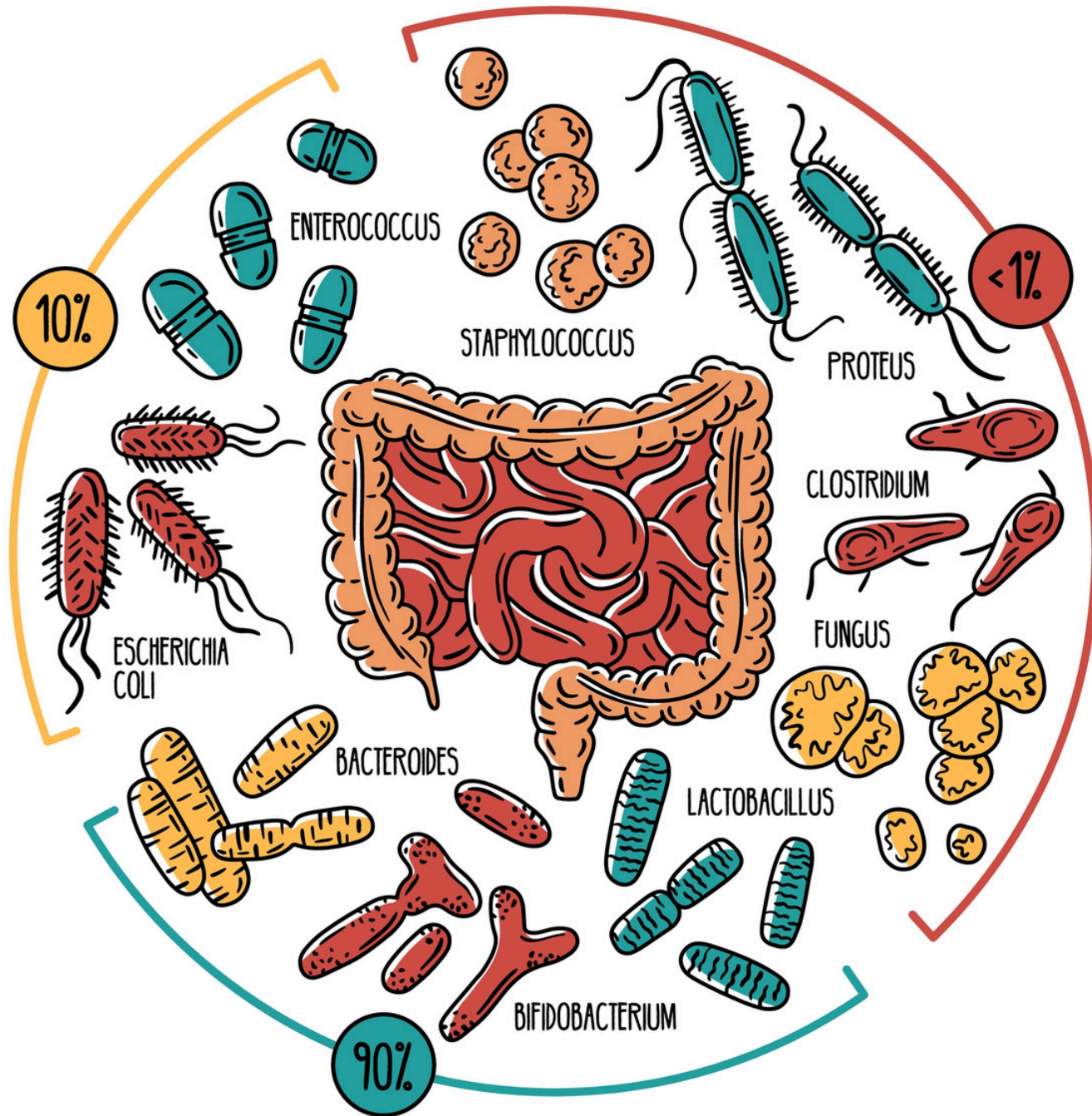


**Carotenoides**



**Antocianines**

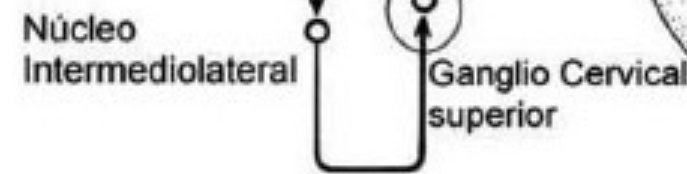
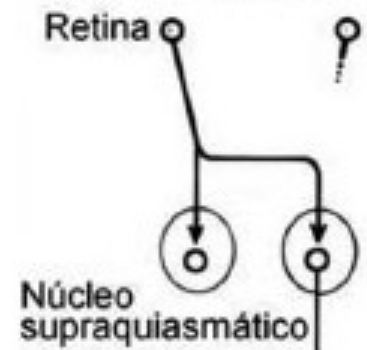
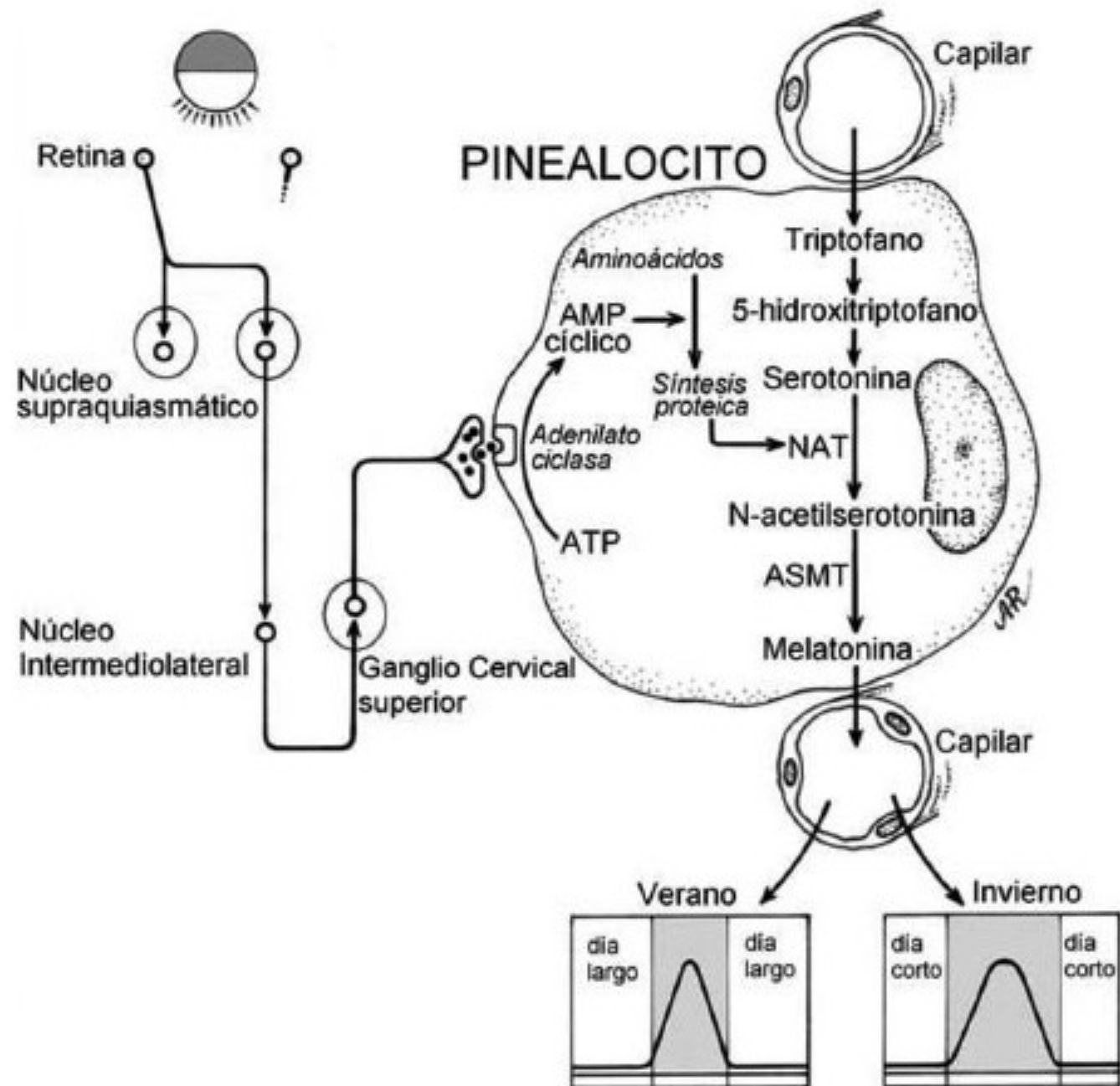




PRObiòtic  
≠  
PREbiòtic







**PINEALOCITO**

